



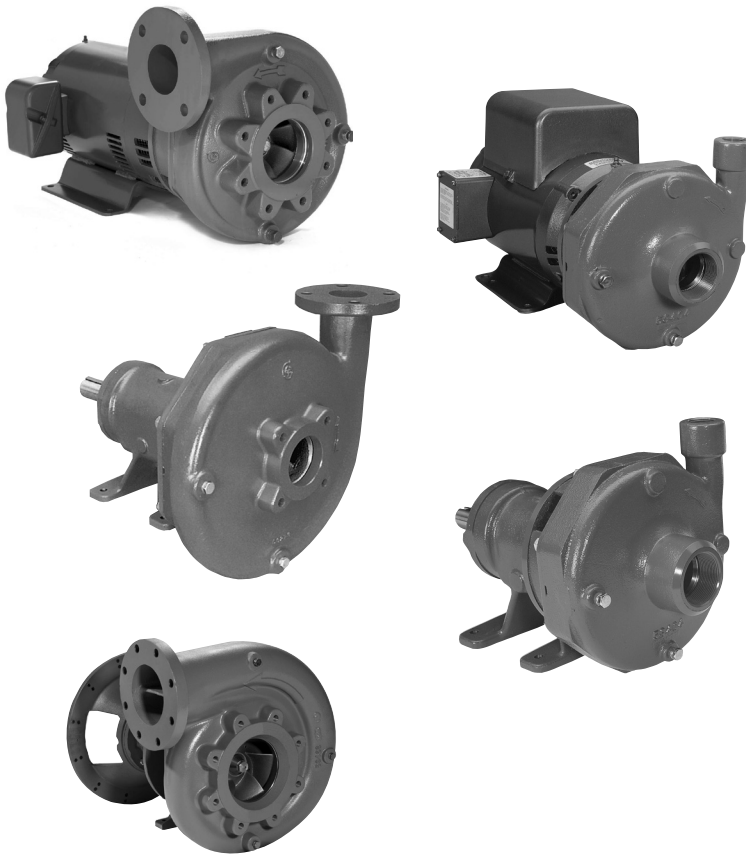
ITT

RAGFLO

Ag./Irrigation

Goulds Pumps

Ag-Flo
Repair Parts



Engineered for life

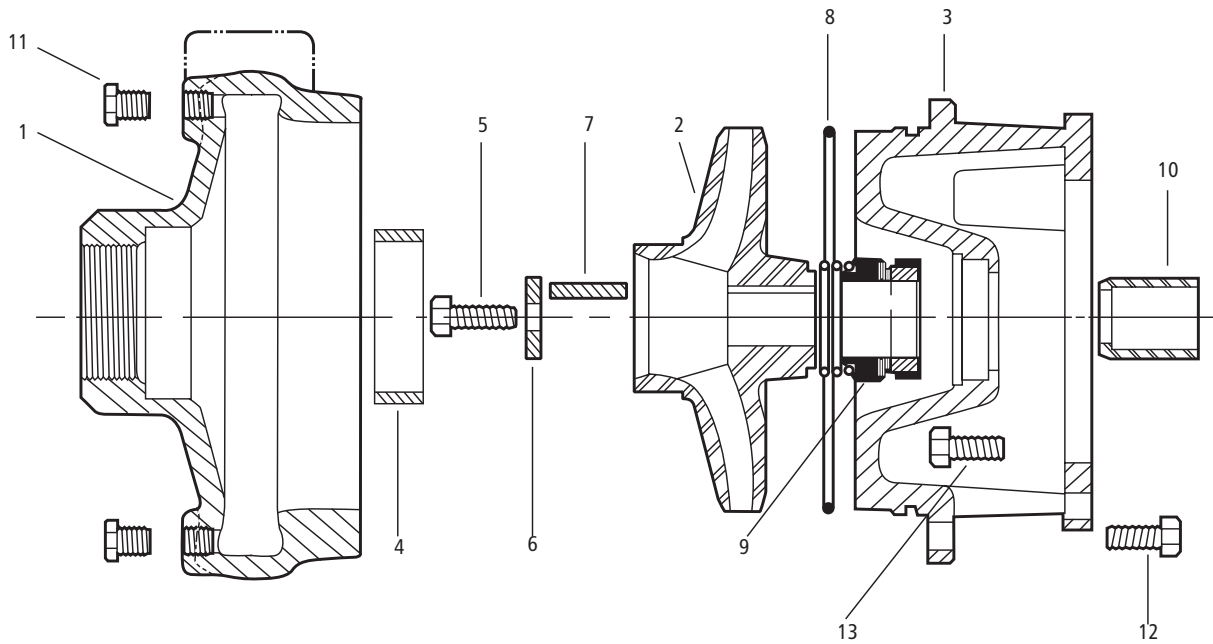
Goulds Pumps

Ag. / Irrigation

Pump End Parts For Close-Coupled or Frame Mounted Configuration

Note: For power frame individual components see Power Frame repair parts book.

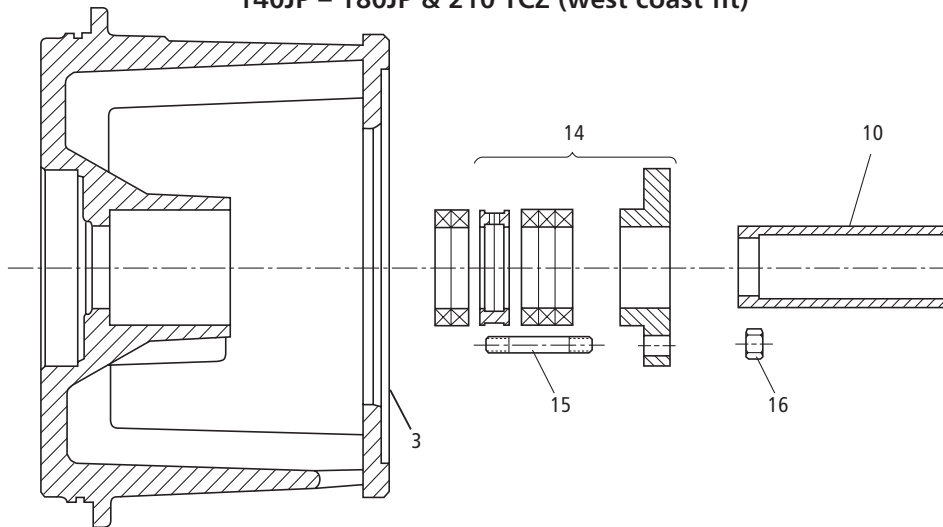
Mechanical Seal Arrangement



NOTE:

Check pump and motor nameplates before ordering impellers.
Select proper part by determining pump size, material, motor type and HP.

Packed Box Arrangement 140JP – 180JP & 210 TCZ (west coast fit)



Pump End Parts For Close-Coupled with 140JM, 180JM, 210JM (Mechanical Seal) 140JP, 180JP, 210TCZ (Packed Box) – 7/8" Ø Impeller Bore

Item No.	Part Description	Material	Repair Part No.							
			1CC7MS	1CC8MS	1½CC6MS		1½CC8MS	2½CC7MS	3CC7MS	
			1 x 2-7	1 x 2-8	1½ x 2-6	1½ x 2-6H	1½ x 2-8	2½ x 3-7	3 x 4-7	
1	Casing	Cast Iron	1K365	1K612	1K98		1K102	1K100	1K128	
2	Impeller (7/8" Bore)	Cast iron			2K118 (5.94)	2K152 (5.94)	2K338 (8.06)	2K1120 (7.06)	2K324 (7.06)	
					2K122 (5.13)	2K154 (5.62)	2K339 (7.75)	2K1111 (6.88)	2K229 (6.38)	
							2K340 (7.63)	2K1113 (6.00)	2K878 (6.00)	
							2K1129 (6.88)	2K1115 (5.44)	2K230 (5.50)	
							2K342 (6.75)	2K1117 (4.75)	2K232 (5.13)	
							2K343 (6.25)	2K1119 (4.06)		
						2K344 (5.75)				
			Sil-Brass	2K805 (6.75)	2K753 (8.06)	2K119 (5.94)	2K153 (5.94)	2K345 (8.06)	2K1023 (7.06)	2K238 (7.06)
				2K1137 (5.88)	2K757 (7.31)	2K123 (5.13)	2K155 (5.62)	2K346 (7.75)	2K1102 (6.88)	2K234 (6.38)
				2K1138 (5.25)	2K761 (6.50)			2K347 (7.63)	2K1104 (6.00)	2K879 (6.00)
	2K811 (4.81)	2K765 (5.38)				2K1130 (6.88)	2K1106 (5.44)	2K235 (5.50)		
					2K349 (6.75)	2K1108 (4.75)	2K237 (5.13)			
					2K350 (6.25)	2K1110 (4.06)				
					2K769 (5.75)					
3	Motor adapter – seal 140-180JM and frame mounted (210JM)	Cast iron	1K118	1K114	1K110	1K110	1K114	1K118	1K118	
		Cast iron	1K120	1K116	1K112	1K112	1K116	1K120	1K120	
	Motor adapter – packing (140-180J) and frame mounted	Cast iron	1K369	1K371	1K367	1K367	1K371	1K369	1K369	
	(210TCZ)	Cast iron	1K370	1K372			1K372	1K370	1K370	
4	Casing wear ring	Cast iron	4K67					4K69†	4K263	
		Bronze	4K68					4K70†	4K264	
5	Impeller bolt		13K43							
6	Impeller washer	AISI 303SS	13L39							
7	Impeller key		4K11							
8	Casing o-ring	BUNA	5K4	5K74	5K73		5K74	5K4		
		EPR	5K193	5K192	5K194		5K192	5K193		
		Viton	5K206	5K205	5K207		5K205	5K206		
9	Seal assembly	Carbon/ceramic BUNA	10K13							
		Carbon/sil-carb. EPR	10K19							
		Carbon/sil-carb. viton	10K27							
		Sil-carb./sil-carb./viton	10K64							
10	Shaft sleeve – mechanical seal	300SS	4K66							
	Shaft sleeve – packed box	300SS	4K473							
11	¼" pipe plug (casing)	Zinc Plated Steel	6K2 (Qty. 4)							
		Bronze	6K42 (Qty. 4)							
12	Hex head screw (casing)	Zinc	13K69 (Qty. 4)							
13	Hex head screw (motor adapter)	(140 – 180) (210)	Plated Steel	13K69 (Qty. 8)						
				13K937						
14	Packed box kit includes – gland Packing & lantern	316SS	15K16							
		Teflon	15K16							
15	Gland stud (qty. 2)	300SS	13K295							
16	Gland nut (qty. 2)	300SS	13K262							

NOTES: Casing includes plugs. Impeller bolt and shaft sleeve must be removed. When replacing, bond and seal shaft sleeve and impeller bolt to shaft with Loctite AL27121.
† 1750 RPM only.

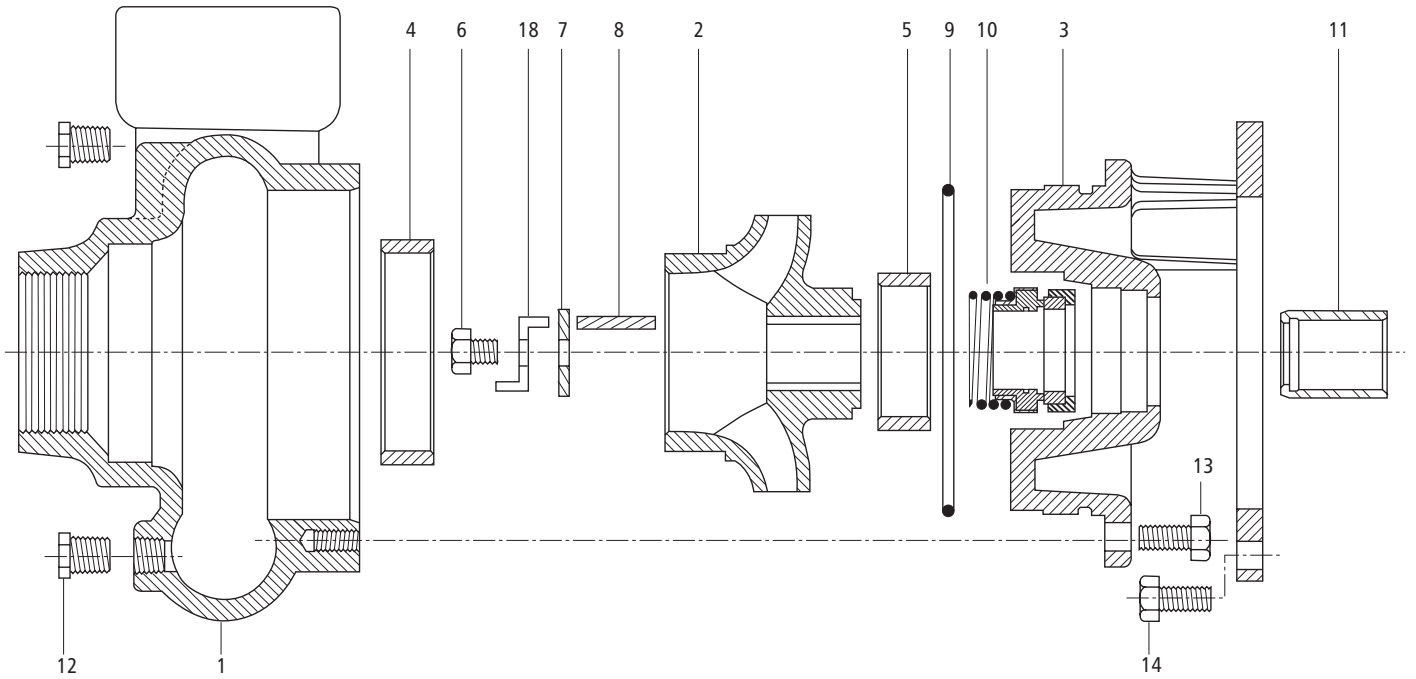
Goulds Pumps

Ag. / Irrigation

Pump End Parts For Close-Coupled or Frame Mounted Configuration

Note: For power frame individual components see Power Frame repair parts book.

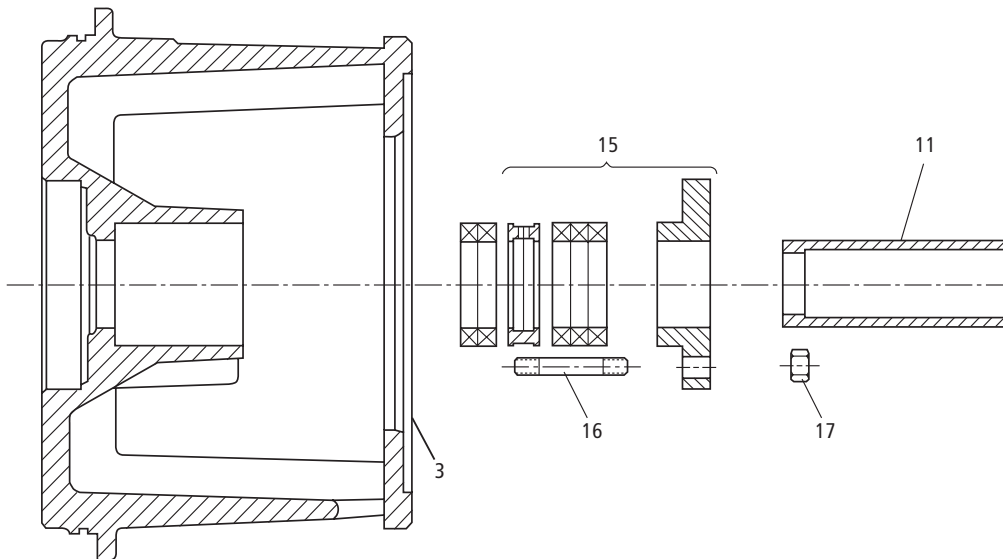
Mechanical Seal Arrangement



Packed Box Arrangement

250JP – 360 TCZ, Frame Mount and SAE Drive

250JP – 445TCZ, Close-Coupled



Pump End Parts For Close-Coupled with 140JM, 180JM, 210JM (Mechanical Seal), 140JP, 180JP, 210TCZ (Packed Box) – 7/8" Ø Impeller Bore

(All pumps in this section have a 7/8" Dia. Impeller Hub Bore)

Item No.	Part Description	Material	Repair Part No.						
			2½CC8MS	3CC8MS	4CC8MS	1½CC10MS	2½CC10MS	3CC10MS	2½CC9MS
			2½ x 3 – 8	3 x 4 – 8	4 x 5 – 8	1½ x 2 – 10	2½ x 3 – 10	3 x 4 – 10	2½ x 3 – 9
1	Casing	Cast Iron	1K130	1K316	1K238	1K132	1K236	1K237	1K236
2	Impeller (7/8" Bore)	Cast Iron	2K575 (7.94)	2K1092 (7.94)	2K591 (7.88)	2K609 (10.06)	2K665 (10.06)	2K633 (10.06)	
			2K1125 (7.63)	2K1094 (7.25)	2K1082 (6.88)	2K1062 (9.38)	2K1127 (9.50)	2K635 (9.75)	
			2K579 (7.19)	2K1096 (6.81)	2K607 (5.75)	2K1046 (8.88)	2K825 (8.25)	2K1066 (8.75)	
			2K581 (6.81)	2K1098 (6.31)		2K1048 (8.25)	2K631 (7.13)	2K643 (7.63)	
			2K585 (6.38)	2K1100 (5.75)		2K1050 (7.50)			
			2K587 (6.19)	2K685 (5.13)					
			2K687 (4.63)						
3	Motor adapter 140-180JM	Cast Iron	1K114			1K319			
	-Seal 210JM		1K116			1K320			
	Motor adapter 140-180JP		1K371			1K381			
	-Packing 210TCZ		1K372			-			
4	Front wear ring	Cast Iron	4K265	4K350	4K352	4K267	4K265	4K350	4K266
		Bronze	4K266	4K351	4K353	4K268	4K266	4K351	
5	Back wear ring	Cast Iron	-	-	-	-	-	-	
		Bronze	-	-	-	-	-	-	
6	Impeller bolt		13K43						
7	Impeller washer	AISI 303 SS	13L39						
8	Square key		4K11						
9	O-ring	BUNA	5K74			5K155			
		Viton	5K205			5K208			
		EPR	5K192			5K318			
10	Seal assembly Carbon/ceramic	BUNA	10K13						
	Carbon/Sil-carb.	EPR	10K19						
	Carbon/Sil-carb.	Viton	10K27						
	Sil-carb./Sil-carb.	Viton	10K64						
11	Shaft sleeve	300 SS	4K66						
	Seal packing		4K473						
12	¾" NPT plug	Zinc	6K2			6K3			
13	Casing HD screw	Plated	13K69						
14	Motor screw	Steel	13K69 (140 & 180 JM/JP) and 13K102 (250 JM/JP & Frame)						
	Loctite #271		AL27121						
15	Packed box kit includes:								
	Gland	316 SS							
	Packing & lantern ring	Teflon	15K16						
16	Stud, gland (Qty. 2)	300 SS	13K295						
17	Hex nut, gland (Qty. 2)	300 SS	13K262						

Goulds Pumps

Ag. / Irrigation

Pump End Parts For Close-Coupled With 250JM-360TCZ (Mechanical Seal), 210JP-360TCZ (Packed Box) And All Frame Mounted Configuration – 1¼" Ø Impeller Bore

Note: For power frame individual components, see Power Frame repair parts book.

Item No.	Part Description	Material	Repair Part No.							
			2½CC8MS 2½ x 3-8	3CC8MS 3 x 4-8	4CC8MS 4 x 5-8	1½CC10MS 1½ x 2-10	2½CC10MS 2½ x 3-10	3CC10MS 3 x 4-10	4CC10MS 4 x 6-10	2½CC9MS 2½ x 3-9
1	Casing	Cast Iron	1K130	1K316	1K238	1K132	1K236	1K237	1K351	1K236
2	Impeller	Cast Iron	2K168 (7.94)	2K1052 (7.94)	2K647 (7.88)	2K490 (10.06)	2K370 (10.06)	2K395 (10.06)		
			2K1125 (7.63)	2K1054 (7.25)	2K1078 (7.38)	2K1026 (9.38)	2K372 (9.63)	2K396 (9.75)		
			2K170 (7.19)	2K1056 (6.81)	2K1145 (6.88)	2K1028 (8.88)	2K1149 (9.50)	2K1072 (8.75)		
			2K172 (6.81)	2K1058 (6.31)	2K657 (6.75)	2K1030 (8.25)	2K373 (9.00)	2K400 (7.63)		
			2K480 (6.38)	2K1060 (5.75)	2K1080 (6.19)	2K1032 (7.50)	2K374 (8.63)			
			2K174 (6.19)	2K701 (5.13)	2K663 (5.75)		2K375 (8.25)			
			2K703 (4.63)			2K376 (8.00)				
						2K378 (7.13)				
3	Motor adapter – seal 210TCZ-250JM & frame mounted 280JM-360TCZ	Cast Iron	1K136	1K317	1K317		1K138			
			1K242	1K318	1K318		1K243			
	Motor adapter – packing 210JP-250JP & frame mounted 280JP-360TCZ	Cast Iron	1K357	1K358	1K358		1K355			
			1K359	1K360	1K360		1K356	–	1K356	
4	Front wear ring	Cast Iron	4K265	4K350	4K352	4K267	4K265	4K350	–	
		Bronze	4K266	4K351	4K353	4K268	4K266	4K351	4K363	
5	Back wear ring	Cast Iron	4K265	4K350	4K350	4K265	4K265	–	–	
		Bronze	4K266	4K351	4K351	4K266	4K266	–	4K351	
6	Impeller bolt								13K155	
7	Impeller washer	AISI 303 SS							13K241	
8	Square key								4K261	
9	O-ring	BUNA		5K74					5K155	
		Viton		5K205					5K208	
		EPR		5K192					5K318	
10	Seal assembly Carbon/ceramic	BUNA							10K16	
	Carbon/Sil-carb.	EPR							10K20	
	Carbon/Sil-carb.	Viton							10K45	
	Sil-carb./Sil-carb.	Viton							10K65	
11	Shaft sleeve, mech. seal	SS							4K262	
	Shaft sleeve, packed box	SS							4K455	
12	¾" NPT plug (Qty. 2)	Zinc	6K2						6K3	
13	Casing HD screw (Qty. 8)	Plated							13K69	
14	Motor screw (Qty. 4)	Steel							13K102 (250 JM/JP & frame mounted)	
	Loctite #271								13K247 (280 JM/JP & larger)	
									AL27121	
15	Packed box kit includes: Gland	316SS								
	Packing & lantern ring	Teflon							15K3	
16	Stud, gland (Qty. 2)	300 SS							13K291	
17	Hex nut, gland (Qty. 2)	300 SS							13K292	

* 3500 RPM units

Pump End Parts For Close-Coupled With 250JM-360TCZ (Mechanical Seal), 210JP-360TCZ (Packed Box) And All Frame Mounted Configuration – 1¼" Ø Impeller Bore

Note: For power frame individual components, see Power Frame repair parts book.

Item No.	Part Description	Material	Repair Part No.			
			2½CC13MS	3CC13MS	4CC13MS	
			2½ x 3-13	3 x 4-13	4 x 6-13	
			M-Group	M-Group	M-Group	
1	Casing	Cast Iron	1K239	1K240	1K479	
2	Impeller	Cast Iron	2K407 (13.06)	2K419 (13.06)	2K979 (13.06)	
			2K1034 (12.38)	2K1038 (12.44)	2K444 (12.50)	
			2K1036 (10.81)	2K1040 (11.50)	2K1076 (11.69)	
			2K411 (9.88)	2K1042 (10.50)	2K448 (11.06)	
				2K427 (9.13)	2K451 (10.25)	
		Sil-Brass		2K1044 (8.31)	2K453 (9.38)	
			2K413 (13.06)	2K431 (13.06)	2K980 (13.06)	
			2K1035 (12.38)	2K1039 (12.44)	2K455 (12.50)	
			2K1037 (10.81)	2K1041 (11.50)	2K1077 (11.69)	
			2K417 (9.88)	2K1043 (10.50)	2K459 (11.06)	
		2K439 (9.13)	2K462 (10.25)			
		2K1045 (8.31)	2K464 (9.38)			
3	Motor adapter – seal 210TCZ-250JM and frame mounted	Cast Iron	1K244			
	280JM-360TCZ		1K245			
	Motor adapter – packing 210JP-250JP and frame mounted		1K361			
	280JP-360TCZ		1K362			
4	Front wear ring	Cast Iron	4K265	4K350	4K362	
		Bronze	4K266	4K351	4K363	
5	Back wear ring	Cast Iron	4K350	4K350	4K350	
		Bronze	4K351	4K351	4K351	
6	Impeller bolt	AISI 303 SS	13K155			
7	Impeller washer		13K241			
8	Square key		4K261			
9	O-ring	BUNA	5K199			
		Viton	5K209			
10	Seal assembly Carbon/ceramic	BUNA	10K16			
	Carbon/Sil-carb.	EPR	10K20			
	Carbon/sil-carb.	Viton	10K45			
	Sil-carb./sil-carb.	Viton	10K65			
11	Shaft sleeve, mech. seal	SS	4K262			
	Shaft sleeve, packed box	SS	4K455			
12	¾" NPT plug (Qty. 2)	Zinc	6K3			
13	Casing HD screw (Qty. 8)	Plated	13K102			
14	Motor screw (Qty. 4)	Steel	13K102 (250JM/250JP and frame mounted)	13K247 (280JM/JP and larger)		
	Loctite #271		AL27121			
15	Packed box kit includes: Gland	316SS	15K3			
	Packing & lantern ring	Teflon				
16	Stud, gland (Qty. 2)	300SS	13K291			
17	Hex nut, gland (Qty. 2)	300SS	13K292			

Goulds Pumps

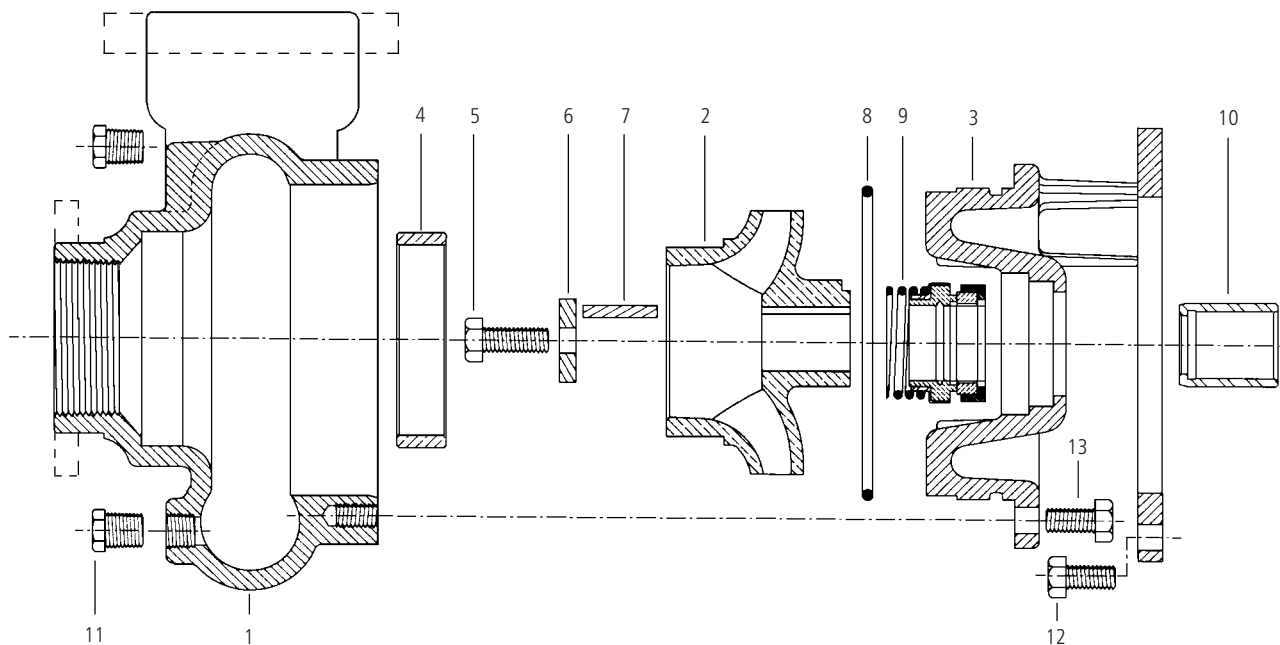
Ag. / Irrigation

Pump End Parts For Close-Coupled With 250JM-360TCZ (Mechanical Seal), 210JP-445TCZ (Packed Box) And All Frame Mounted Configuration

Note: For power frame individual parts, see Power Frame repair parts page.

Item No.	Part Description	Material	Repair Part No.				
			6CC13MS	8CC13MS	6CC13MS	8CC13MS	4CC16MS
			6 x 8-13	8 x 10-13	6 x 8-13	8 x 10-13	4 x 6-16
			1 1/4" Impeller Hub Bore		1 3/8" Impeller Hub Bore		
1	Casing	Cast Iron	1K352		1K352	1K353	1K354
2	Impeller	Sil-Brass	2K886 (13.00)	2K890 (13.00)	2K842 (13.00)	2K860 (13.00)	2K873 (16.00)
			2K888 (12.31)	2K892 (12.38)	2K844 (12.31)	2K863 (11.94)	2K1070 (14.75)
			2K846 (11.63)	2K893 (11.94)	2K880 (11.63)	2K866 (10.88)	2K1071 (13.88)
			2K848 (10.88)	2K896 (10.88)	2K882 (10.88)	2K867 (9.81)	
			2K849 (10.50)	2K897 (9.81)	2K883 (10.50)		
3	Motor adapter – Mech. seal Frame Mounted 210JP-250JP 280-400TCZ 440TCZ	Cast Iron	13K377		1K377		1K379
			1K378		1K378		1K380
			1K480 & 1K412				
	Motor adapter – Packed box Frame Mounted 210JP-250JP 280-400TCZ 440TCZ		1K373		1K373		1K375
			1K374		1K374		1K376
		1K480 & 1K412					
4	Front wear ring	Bronze	4K475	4K476	4K475	4K476	4K477
5	Back wear ring	Bronze	4K474		4K474		
6	Impeller bolt	300 SS	13K155				
7	Impeller washer	303 SS	13K290				
8	Square key	Steel	4K460				
9	O-ring	BUNA	5K199				5K298
		Viton	5K209				5K299
10	Seal assembly (Stat / Rot) Ceramic/carbon	BUNA	10K84				
	Sil-carb./Carbon	Viton	10K112				
	Sil-carb./sil-carb.	Viton	10K144				
11	Shaft sleeve, mech. seal Frame Mounted 210-320 360-440TCZ	300 SS					4K457
							4K457
					4K459		
	Shaft sleeve, packed box Frame Mounted 210-320 360-440TCZ						4K456
							4K458
12	Plug, casing (Qty. 2)		6K3				
13	Bolt, casing (Qty. 8)		13K69				
14	Bolt, motor (Qty. 4) Frame Mounted	Zinc Plated Steel					
	210-250		13K102 (Qty. 4)				
	280-405TCZ		13K247 (Qty. 4)				
	445TCZ		13K247 (Qty. 8)				
15	Packed box kit includes:						
	Gland	316SS	15K4				
	Packing & lantern ring	Teflon					
16	Stud, gland (Qty. 2)	300SS	13K291				
17	Hex nut, gland (Qty. 2)	300SS	13K292				

- 2 x 2-5, 2½ x 2½-5 and 3 x 3-5 have NPT suction and discharge connections.
- 4 x 4-5 and 5 x 5-6 have flanged suction and discharge connections.



Item No.	Description	Material	2CC5MS Part No.	21/2CC5MS Part No.	3CC5MS Part No.	4CC5MS Part No.	5CC6MS Part No.	
1	Casing	Cast iron	1K306	1K307	1K308	1K475	1K476	
2	Impeller	Cast iron	2K534 (4.0)	2K544 (4.19)	2K563 (4.38)	2K976 (4.81)	2K998 (5.50 x 4.50)	
		Bronze	2K535 (4.0)	2K545 (4.19)	2K564 (4.38)	2K981 (4.81)	2K999 (5.50 x 4.50)	
		Cast iron	2K1143 (3.88)	2K546 (3.94)	2K565 (4.19)	2K982 (4.62)	2K990 (5.31 x 4.31)	
		Bronze	2K1144 (3.88)	2K547 (3.94)	2K566 (4.19)	2K983 (4.62)	2K991 (5.31 x 4.31)	
		Cast iron	2K538 (3.5)	2K548 (3.75)	2K567 (4.00)	2K984 (4.50)	2K992 (5 x 3.88)	
		Bronze	2K539 (3.5)	2K549 (3.75)	2K568 (4.00)	2K985 (4.50)	2K993 (5 x 3.88)	
		Cast Iron	2K540 (3.25)	2K550 (3.56)	2K569 (3.81)	2K986 (4.19)	2K994 (5 x 3.56)	
		Bronze	2K541 (3.25)	2K551 (3.56)	2K570 (3.81)	2K987 (4.19)	2K995 (5 x 3.56)	
		Cast iron	2K542 (3.0)	2K552 (3.38)	2K571 (3.62)	2K988 (4.00)	2K996 (5 x 3.03)	
Bronze	2K543 (3.0)	2K533 (3.38)	2K572 (3.62)	2K989 (4.00)	2K997 (5 x 3.03)			
3	Motor adapter	Cast iron	140-180 Frame	1K309			1K110	
			210TCZ Frame				1K112	
			210 Frame				1K112	
4	Casing wear ring	Brass	4K268	4K70	4K266	4K627		
		Cast iron	4K267	4K69	4K265	4K638		
5	Impeller bolt	304 SS	13K43					
6	Impeller washer	304 SS	13K133			13L39		
7	Key	304 SS	4K11					
8	O-ring	BUNA	5K235			5K73		
		Viton	5K236			5K207		
		EPR	5K315			5K194		
9	Standard seal	10K13						
	Hi-temp seal	10K19						
	Viton seal	10K27						
	Abrasive seal	10K64						
10	Shaft sleeve	304 SS	4K66					
11	¼" pipe plug	Cast iron	6K2					
12	Hex head screw - MA	Steel-zinc plated	13K69				13K69 (140-180)	
							13K93 (210)	
13	Hex head screw - casing		13K69					

Goulds Pumps

Ag. / Irrigation

Notes

Notes

ITT

2881 East Bayard Street, Seneca Falls, NY 13148

Phone: (315) 568-7123 • Fax: (315) 568-7973

www.goulds.com

Goulds Pumps is a registered trademark of ITT Corporation. ITT, the Engineered Blocks Symbol and Engineered for Life are registered trademarks of ITT Manufacturing Enterprises, Inc.

Copyright © 2009 ITT Corporation RAGFLO June, 2009
SPECIFICATIONS ARE SUBJECT TO CHANGE WITHOUT NOTICE.

Printed in U.S.A.



Engineered for life